



## ACTIVE IP ADDRESS LOCALIZATION AND TRACKING

The integrity of your IT-registered data is of significant value to your company. EfficientIP's solutions supply the tools allowing you to automatically document IP address attributes. IPLocator™ appliance is a network discovery tool that offers industry-leading network reconciliation capabilities. IPLocator™ provides precise and comprehensive views of the network connections. IPLocator™ brings a global vision with a centralized analysis of your address locations. The automated IP plan documentation removes the necessity to manually input this information in the IPAM repository.

IPLocator™ appliance provides comprehensive visibility into IP address connections on the network by bringing a real capacity to identify, monitor and locate IP address locations on network devices. Therefore you can uncover inconsistencies on an ongoing basis and always have an up to date IP plan in tune with current and future operations.

## Dynamic Devices Self-Documenting

For each IP and MAC address that is discovered, IPLocator™ appliance will identify the following key information: switch name, switch slot, switch port, switch description, switch OS version, VLAN number, switch status, port speed, link status, first seen and last seen.

MAC address	IP Address	MAC vendor	DNS name	Network device	Port name	slot	Port	VLAN
00:00:0c:05:1b:25	10.2.144.1	CISCO SYSTEMS, INC.	ro2.de.corp	Device_106	FastEthernet0/1	0	1	1
00:00:0c:05:1b:26	10.2.172.1	CISCO SYSTEMS, INC.	ro5.de.corp	Device_356	GigabitEthernet2/7 - Ethernet 1Gbps LH-Fiber	2	7	165
00:00:0c:05:1b:26	10.2.172.1	CISCO SYSTEMS, INC.	ro5.de.corp	Device_197	Port 1/1 - 10/100Mbps RJ45 cat5	1	1	Trunk
00:00:0c:05:1b:26	10.2.172.1	CISCO SYSTEMS, INC.	ro5.de.corp	Device_191	Port 1/2 - 1Gbps GBIC LX (AGILENT)	1	2	Trunk
00:00:0c:59:0e:31	10.4.180.1	CISCO SYSTEMS, INC.	ro8.fr.corp	Device_112	FastEthernet0/3	0	3	642
00:00:0c:59:0e:34	10.4.181.1	CISCO SYSTEMS, INC.	ro11.fr.corp	Device_112	FastEthernet0/46	0	46	640
00:00:0c:59:0e:3a	10.4.190.1	CISCO SYSTEMS, INC.	ro14.fr.corp	Device_112	FastEthernet0/47	0	47	163
00:00:0c:59:0e:3d	10.3.125.1	CISCO SYSTEMS, INC.	ro17.es.corp	Device_112	FastEthernet0/2	0	2	1
00:00:0c:59:0e:40	10.2.182.1	CISCO SYSTEMS, INC.	ro20.de.corp	Device_112	FastEthernet0/41	0	41	645
00:00:48:93:a6:13	10.2.144.16	SEIKO EPSON	pr0.de.corp	Device_182	FastEthernet0/48	1	48	94
00:00:48:99:bd:9d	10.2.172.16	SEIKO EPSON	pr3.de.corp	Device_121	FastEthernet0/6	0	6	125
00:00:48:9e:b0:b6	10.4.180.16	SEIKO EPSON	pr6.fr.corp	Device_150	FastEthernet0/9	1	9	107
00:00:48:9e:39:92	10.4.181.16	SEIKO EPSON	pr9.fr.corp	Device_48	Port 1/35 - 10/100Base-Tx	1	35	146
00:00:48:ab:54:a6	10.4.190.16	SEIKO EPSON	pr12.fr.corp	Device_146	FastEthernet0/19	0	19	228

## Reclaim Unused IP and MAC Addresses

EfficientIP's discovery process can identify IP and MAC addresses which have remained unused during a given lapse of time. Based on this information, it is easy to determine whether IP addresses can be released or reallocated.

## Dynamic Network Devices Self-Documenting

IPLocator automatically discovers the network equipment by identifying:

- The name
- The type (model description)
- The OS version
- The number of slots and interfaces

Name	IP	Type	Tb ports	Used ports	Free ports	Ports usage	Last updated	Analysis	Status
eip-alcatel-iss210	10.0.253.5	Alcatel Iss210	26	15	11	58%	22/04/2010 12:56	10.294 s	OK
eip-3com-3300	10.0.253.7	3Com Superstack2 3300	12	6	6	50%	22/04/2010 12:56	13.931 s	OK
eip-lucent-p333t	10.0.253.2	Lucent cajunP333T	26	10	16	38%	22/04/2010 12:56	22.089 s	OK
eip-cisco-2900	10.0.253.3	Cisco Catalyst 2924-XLv	24	8	16	33%	22/04/2010 12:56	9.396 s	OK
eip-alcatel-6024	10.0.253.1	Alcatel OmniStack 6024	24	2	22	8%	22/04/2010 12:56	12.123 s	OK

In addition IPLocator automatically discovers the network interface of each network device and its associated characteristics :

- Name
- Speed
- Slot and port number
- VLAN of the interface
- Status (up or down)

Name	Network device	Slot	Port	VLAN	Speed	Duplex	Status
Port 1/3 - 10/100Base-Tx	Device_398	1	3	20	100 Mbps	full	Active
Port 1/4 - 10/100Base-Tx	Device_398	1	4	20	100 Mbps	full	Active
Port 1/5 - 10/100Base-Tx	Device_398	1	5	20	100 Mbps	full	Active
Port 1/7 - 10/100Base-Tx	Device_398	1	7	20	100 Mbps	full	Active
Port 3/20 - Ethernet 10/100Mbps	Device_374	3	20	20	100 Mbps	full	Active
Port 3/21 - Ethernet 10/100Mbps	Device_374	3	21	11	100 Mbps	full	Active
Port 3/22 - Ethernet 10/100Mbps	Device_374	3	22	11	100 Mbps	full	Active
Port 3/23 - Ethernet 10/100Mbps	Device_374	3	23	11	100 Mbps	full	Active
Port 1/2 - 100BaseTX	Device_300	1	2	1	100 Mbps	full	Active

## Scheduled Discoveries

IPLocator enables you to define discovery scenarios by specifying the resources to be scanned and the frequency of scans. This allows you to adapt the process in order to best suit the needs of your company.

## Control IP Port Occupancy Rate

EfficientIP's discovery process can identify any switch ports which have remained unused during a given lapse of time. Based on this information, it is easy to determine whether a switch port can be released or reallocated. This is particularly important in the context of datacenters in order to avoid an overconsumption of Giga Ethernet ports to unused servers.



## Remove Infected Devices

Based on discovery results, it is easy to locate and remove an infected station in order to provide an optimum reactivity to security alerts.

## Discover Unauthorized Devices

Discoveries made by IPLocator™ can launch alerts when an unknown device is detected on the network.

## History of IP/MAC Addresses Mobility

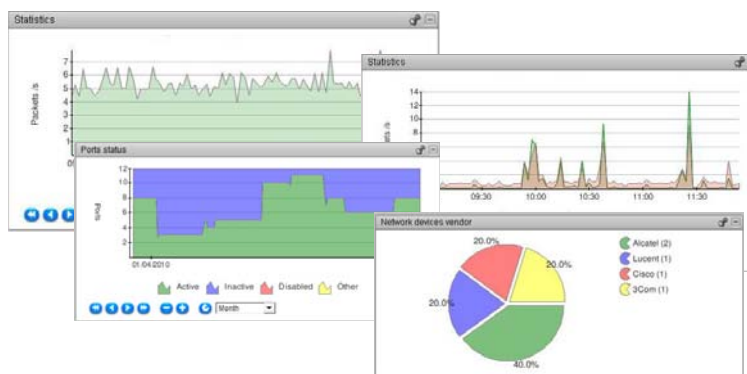
IPLocator™ identifies and archives any changes in IP or MAC address location on the network. It brings a global view of the company's stations' mobility by address offset -switch, slot, port and VLAN offset of an IP and/or a MAC address. The displayed, archived information shows when, where and who was connected and remains connected so that IP and MAC mobility can be tracked easily.

## IPAM Reconciliation

IPLocator™ enables you to compare the theoretical IP address locations defined in SOLIDserver's™ IPAM repository with the discovered information. In one glance, it is easy to identify incoherencies and receive alerts by email. Advanced reports supply an easy, comprehensive and summarized view.

## Bandwith Monitoring of Network Device Ports

IPLocator provides advanced graphs to monitor the bandwidth of your network device ports. You can easily anticipate ports usage trend and avoid saturation, understand the real bandwidth consumption to optimize port allocation or detect unexpected increases in port use for a pro-active network devices management.



## Data Exports

IPLocator allows exports of complete data lists (XML, CSV, Excel files) to all levels, using a resource selection on a web interface. The search engine enables the filtering of the information to be exported.

## Reports and Statistics

EfficientIP's solutions supply a variety of reports on network discoveries, enabling you to have a pro-active analysis of your network activity and trends. Reports are a powerful tool in order to control capacity planning and get a real understanding of how network resources are used. Reports are also important information to help deal with or anticipate problems.

## Advanced Search Engines

The IPLocator search engine enables multi-criteria searches and the immediate identification of information related to a MAC address, an IP address and network equipment..